

SEEKING TREASURE

Circle the correct choices.

1. What 2 famous trees were placed in the Garden of Eden? (2:9)



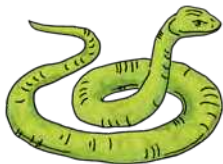
2. How many riverheads did the Garden of Eden have? (2:10)



3. Who did Adam blame for causing him to eat the fruit? (3:12)



4. Who did Hawwah blame for causing her to eat the fruit? (3:13)



5. What did Elohim place in the Garden of Eden to prevent Adam and Hawwah from returning to the garden? (3:24)

