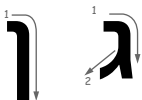


Gan (garden)

גן

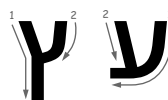
Nun Sofit Gimel



Etz (tree)

עץ

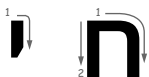
Tsade Sofit Ayin



Chai (life)

חי

Yud Chet



Da'at (knowledge)

דעת

Tav Ayin Dalet










Tov (good)

טוב

Vet Vav Tet



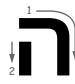

Ra (evil)

רע

Ayin Resh


Nahar (river)

נהר

Resh Hey Nun


Nahash (serpent)

נחש

Shin Chet Nun
