

SEEKING TREASURE

Circle the correct choices.

1. What did Abimelek's men take from Abraham? (20:2; 21:25)



2. What did Abraham plant at Be'ersheba? (21:33)



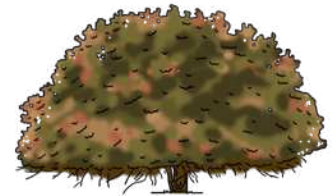
Banana tree



Tamarisk tree



Coconut tree

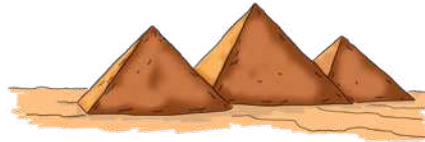


Terebinth tree

3. Where did Yahweh tell Yitshaq NOT to go during the famine? (26:2)



Land of Kena'an

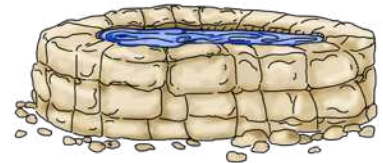
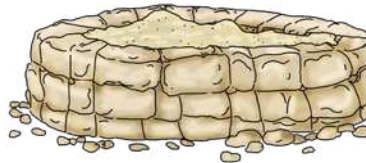


Mitsrayim



Garden of Eden

4. Circle the picture which depicts what action the Philistines did to Yitshaq's wells. (26:15)



5. What did Yitshaq make for King Abimelek? (26:30)

