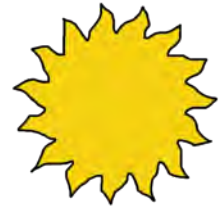
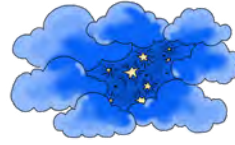


SEEKING TREASURE

Circle the correct choices.

1. Yahweh compared Abram's seed to what? (15:5)



2. How many years did Yahweh say his seed would be in bondage? (15:13)



3. What did Yahweh change Abram's name to? (17:5)

Sarai



Ya'aqob



Abram



4. On what day is a male baby circumcised? (17:12)



5. What did Yahweh change Sarai's name to? (17:15)

Sarai



Ya'aqob



Abram

