

SEEKING TREASURE

Circle the correct choices.

1. Who did Mosheh take with him to see Pharaoh? (7:7)



Abraham



Aharon

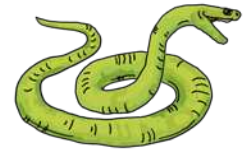


Malkitsedeq



Yoseph

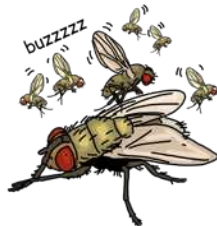
2. What happened to Aharon's rod when he threw it to the ground? (7:10)



3. What happened when Aharon stretched the rod over the waters? (7:19)



4. Which plagues could Pharaoh's magicians also create? Circle all that apply. (7:22; 8:7, 18)



5. Whose heart was hardened over and over? (7:13, 14, 22, 23; 8:15, 19, 32; 9:7, 12)



Aharon



Pharaoh



Mosheh



Yoseph

6. How many plagues did Yahweh send in this parsha?

