

SEEKING TREASURE

Circle the correct choices.

1. What insect did Yahweh send to eat the rest of the crops after the hail came? (10:4-5)



Ants



Gnats



Flies



Locusts

2. What did Yahweh send to bring the locusts? (10:13)

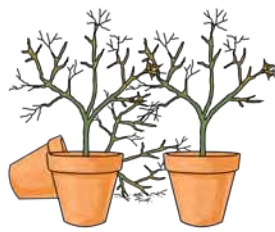
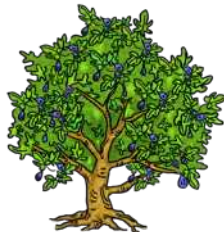


East wind

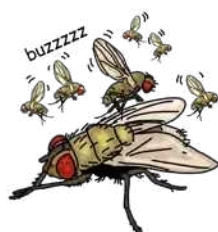


West wind

3. What did the locusts do to all the trees and the plants? (10:15)



4. What plague did Yahweh send after the locusts that lasted 3 days? (10:21)



5. What was the final plague? (11:5)

