

3-D CRAFT

Furniture Pieces for the Mishkan

Exodus 25:10-37

Materials:

- Cardstock - white or gold
- Lollipop sticks - gold (6)
- Small pebble - to hold the lampstand down
- X-acto knife
- Double-sided tape
- Ruler
- Tacky or Gorilla glue
- Scissors
- Coloring pencils, crayons or markers
- Craft Templates: Ark of the Witness A & B (BW) or C & D (color);
Table of Showbread E (BW) or F (color);
Lampstand G (BW) or H (color);
Altar of Incense I (BW) or J (color)



Parent/Teacher Preparation:

- Print Craft Templates of choice on white or gold cardstock.

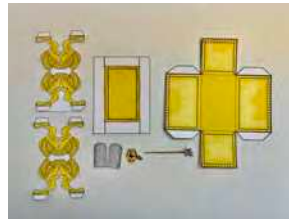
Instructions for the 3-D Craft:

- If using BW Templates, color using medium of choice.

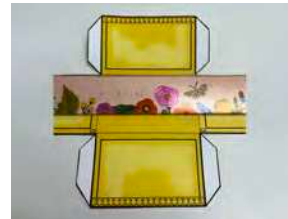


Ark of the Witness

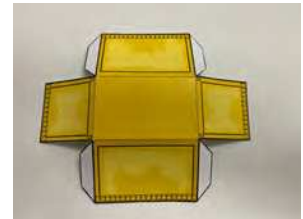
- Cut out all Template pieces. (P1)
- Using a ruler to assist you, fold the tabs and lines on the ark. (P2a, P2b, P2c)
- Roll double-sided tape on the tabs of the ark. (P3)
- Connect all the tabs to create a box. (P4a, P4b, P4c)
- Using an X-acto knife, create slits on the dotted lines of the lid. (P5)



P1



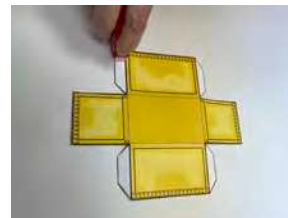
P2a



P2b



P2c



P3



P4a



P4b



P4c



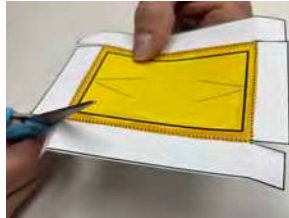
P5

Instructions for the 3-D Craft Cont'd:

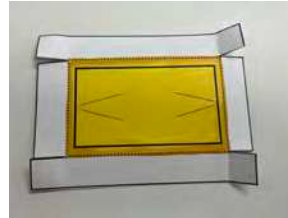
- Using a ruler to assist you, fold the tabs and lines on the lid. (P6)
- Using the pictures as your guide, cut the tabs to create foldable flaps. (P7a, P7b)
- Roll double-sided tape on the 4 cut tabs. (P8)
- Connect the tabs to the inside of the cover creating a box. (P9a, P9b)
- Place the lid of atonement onto the ark. (P10)
- Fold the kerubim in half horizontally. (P11)
- Unfold and roll double-sided tape on the inside—press the 2 sides together. (P12)
- Now fold the kerubim in half vertically. (P13)
- Take the lid of atonement and insert the tabs of the kerubim into the slits. (P14)
- Place the lid of atonement onto the ark of the witness. (P15a, P15b)
- On one side of the ark that has rings, spread a line of glue from 1 ring to the other and lay 1 gold pole onto the glue. (P16a, P16b)
- Allow to dry and repeat the process for the opposite side. (P17a, P17b)
- Allow to dry.
- Remove the lid of atonement and place the items that went into the ark—10 Commandments tablets, pot of manna, Aharon's rod that budded. (P18a, P18b)



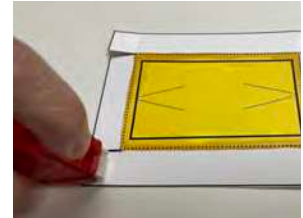
P6



P7a



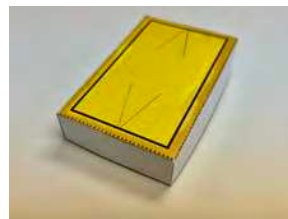
P7b



P8



P9a



P9b



P10



P11



P12



P13



P14



P15a



P15b



P16a



P16b



P17a



P17b



P18a

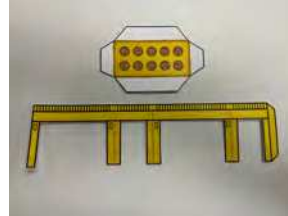
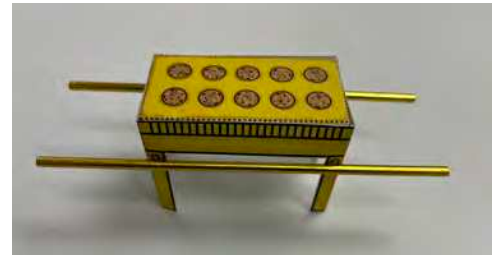


P18b

Instructions for the 3-D Craft Cont'd:

Table of Showbread

- Cut out all Template pieces. (P1)
- Using a ruler to assist you, fold the tabs and lines on the table legs. (P2a, P2b, P2c)
- Roll double-sided tape on the tab of the table legs. (P3)
- Using a ruler to assist you, fold the tabs on the table top. (P4a, P4b)
- Roll double-sided tape on the tab of the table top. (P5)
- Place the long rectangle side of the table top on the inside of the table legs. (P6a, P6b, P6c)
- Start wrapping the table legs around the table top. (P7a, P7b, P7c)
- Your table is now ready to attach the gold poles. (P8)
- Place glue on the rings on one side of the table legs and lay 1 gold pole onto the glue. (P9a, P9b)
- Allow to dry and repeat the process for the opposite side. (P10a, P10b)
- Allow to dry.



P1



P2a



P2b



P2c



P3



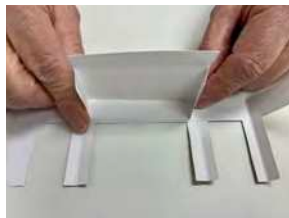
P4a



P4b



P5



P6a



P6b



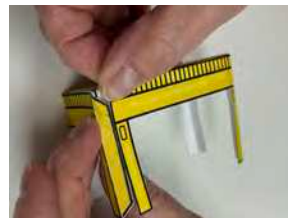
P6c



P7a



P7b



P7c



P8



P9a



P9b



P10a

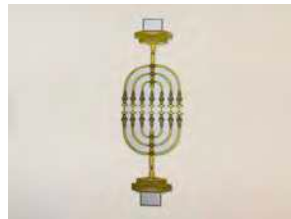


P10b

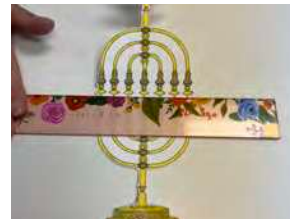
Instructions for the 3-D Craft Cont'd:

Lampstand

- Cut out the Lampstand piece. (P1)
- Using a ruler to assist you, fold the lampstand horizontally down the middle as well as the end tabs. (P2a, P2b)
- Roll double-sided tape on the inside of the lampstand, the top part of the shaft as well as one side of the tabs on the lampstand. (P3a, P3b, P3c)
- Press firmly to connect both sides of the lampstand as well as the tabs. (P4a, P4b)
- Place a pebble on the inside of the tabs to add weight to the lampstand in order for it to stand up. (P5)



P1



P2a



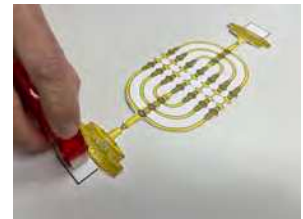
P2b



P3a



P3b



P3c



P4a



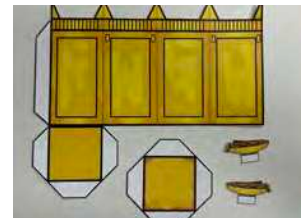
P4b



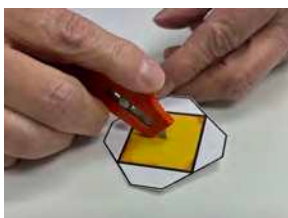
P5

Altar of Incense

- Cut out all Template pieces. (P1)
- Using an X-acto knife, create slits on the dotted lines of the top insert. (P2)
- Using a ruler to assist you, fold the tabs and lines on the altar of incense and the top insert. (P3a, P3b, P3c)



P1



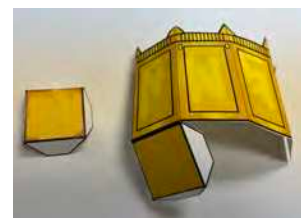
P2



P3a



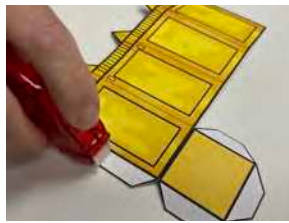
P3b



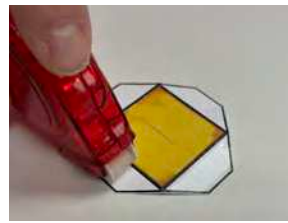
P3c

Instructions for the 3-D Craft Cont'd:

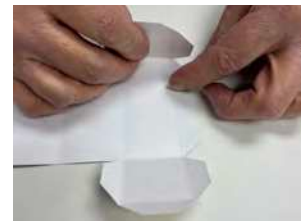
- Roll double-sided tape on the tabs of the altar of incense as well as the top insert. (P4a, P4b)
- Place the top insert on the inside of the altar of incense directly opposite of the bottom of the altar of incense. The 2 ends will resemble each other. (P5a, P5b)
- Start connecting the 4 sides of the altar of incense to the top insert. (P6a, P6b, P6c, P6d, P6e)
- Apply glue to the back of the incense and connect the 2 pieces to each other. Place into the slits of the top insert. (P7a, P7b)
- On one side of the altar that has rings, spread a line of glue from 1 ring to the other and lay 1 gold pole onto the glue. (P8a, P8b)
- Allow to dry and repeat the process for the opposite side. (P9a, P9b)
- Allow to dry.



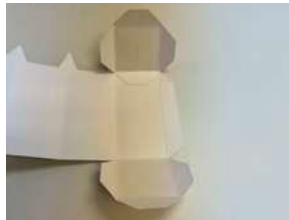
P4a



P4b



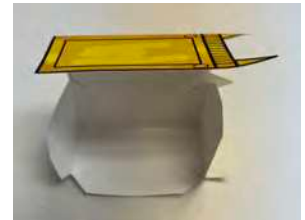
P5a



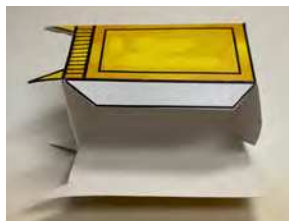
P5b



P6a



P6b



P6c



P6d



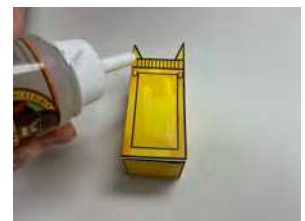
P6e



P7a



P7b



P8a



P8b



P9a



P9b

This craft is a 3-D visual representation of the 4 furniture pieces that were inside the Dwelling Place.