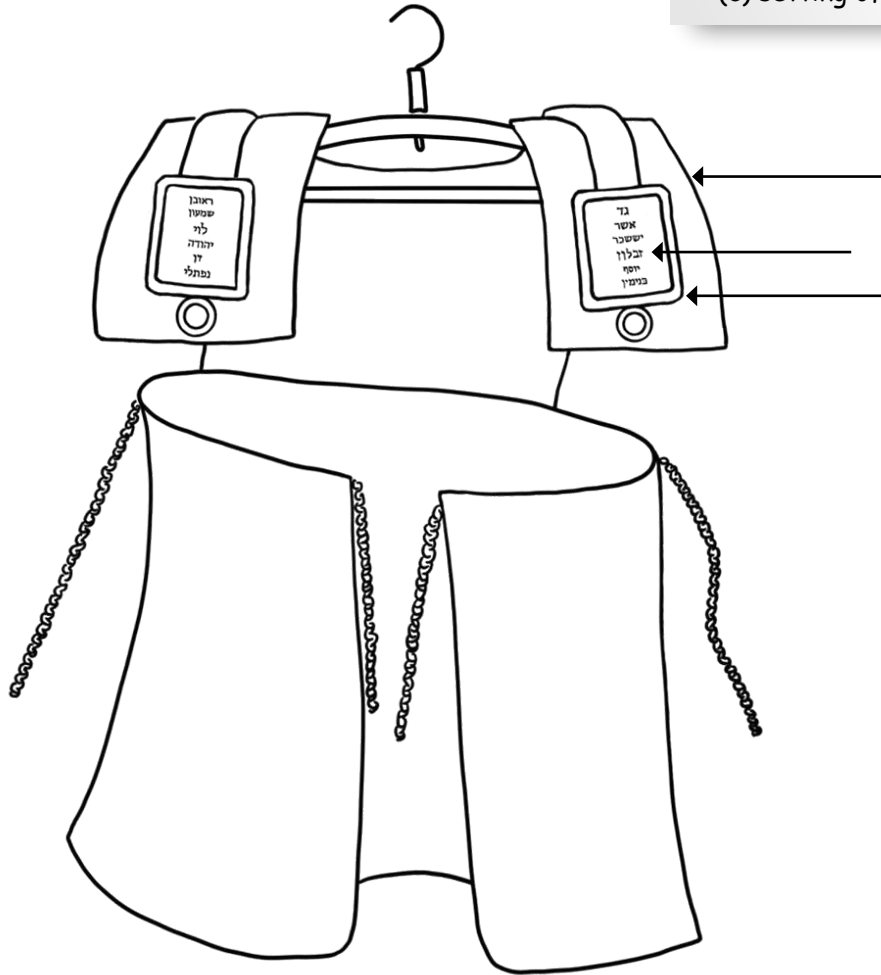


# WORKSHEETS

Exodus 28 describes the shoulder garment

Label the following:

- (a) shoham stones (2)
- (b) shoulder pieces (2)
- (c) setting of gold (2)



What was the shoulder garment made out of? v6

1. \_\_\_\_\_
2. \_\_\_\_\_
3. \_\_\_\_\_
4. \_\_\_\_\_
5. \_\_\_\_\_

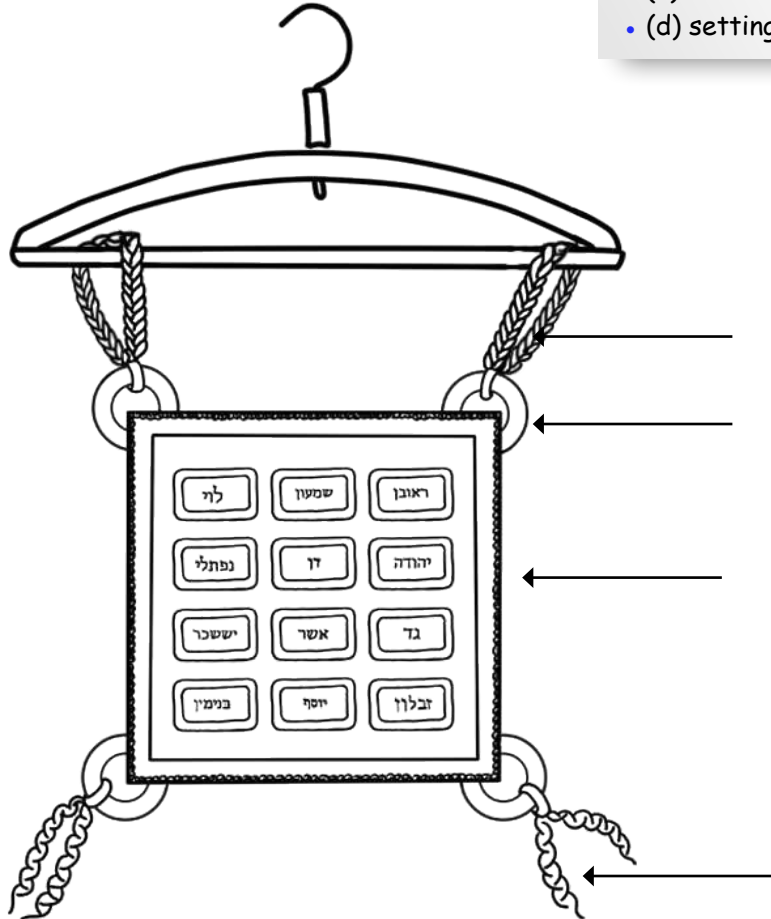
What was engraved on the shoham stones? v9 \_\_\_\_\_

What were the stones for? v12 \_\_\_\_\_

## Exodus 28 describes the breastplate

Label the following:

- (a) chains of pure gold (2)
- (b) rings (4)
- (c) braided chains of corded work (2)
- (d) settings of stones (12)



What was the breastplate made out of? v15

- \_\_\_\_\_
- \_\_\_\_\_
- \_\_\_\_\_
- \_\_\_\_\_
- \_\_\_\_\_

What was written on each stone? v21 \_\_\_\_\_

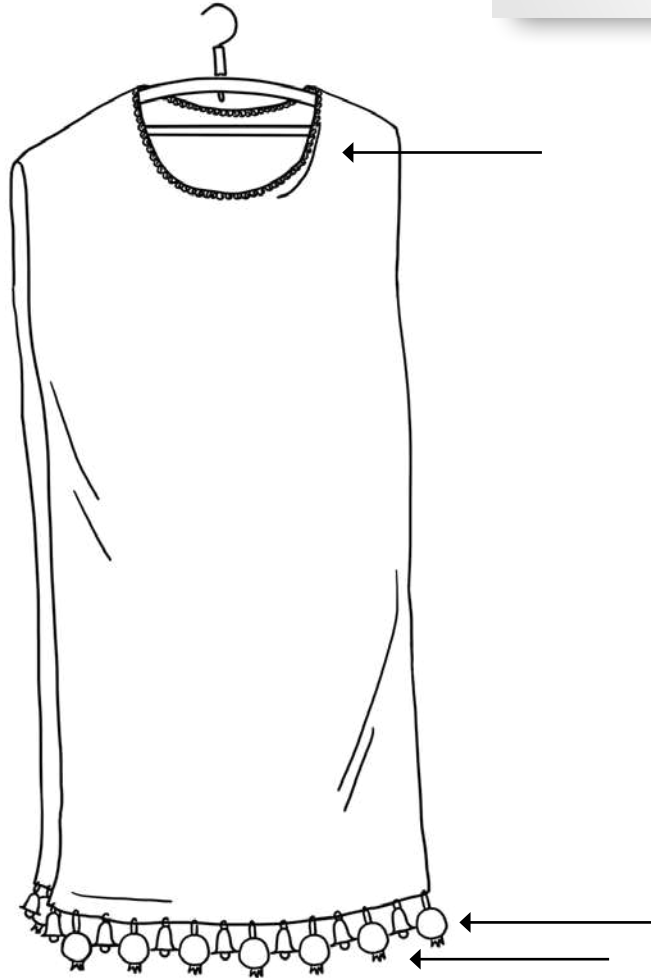
What shape was the breastplate? v16 \_\_\_\_\_

What color was the cord? v28 \_\_\_\_\_

Exodus 28 describes the robe

Label the following:

- (a) opening for head
- (b) hem of pomegranates
- (c) hem of bells



What color is the robe? v31 \_\_\_\_\_

What color were the pomegranates? v33 1. \_\_\_\_\_

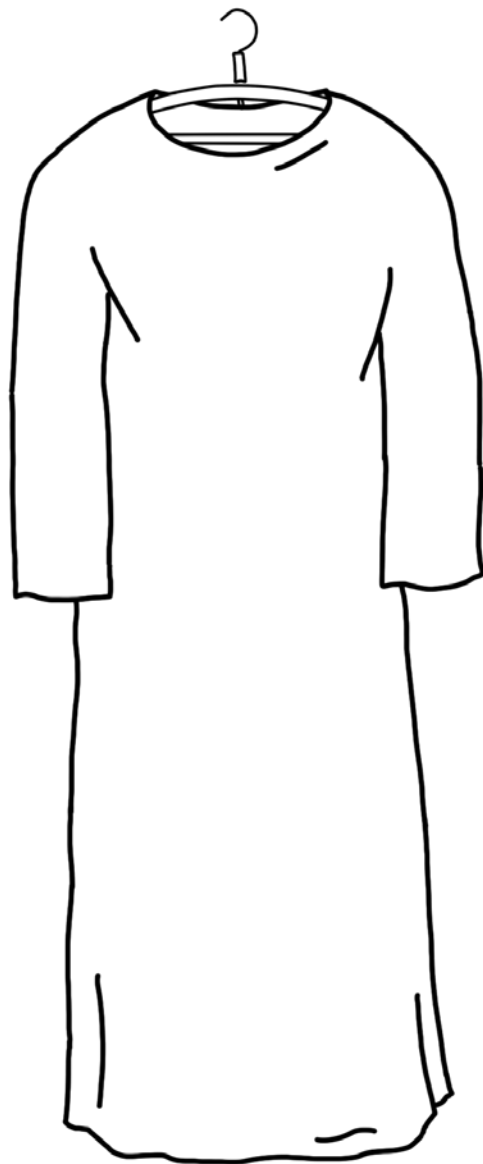
2. \_\_\_\_\_

3. \_\_\_\_\_

What color were the bells? v33 \_\_\_\_\_



Exodus 28 describes the embroidered long shirt



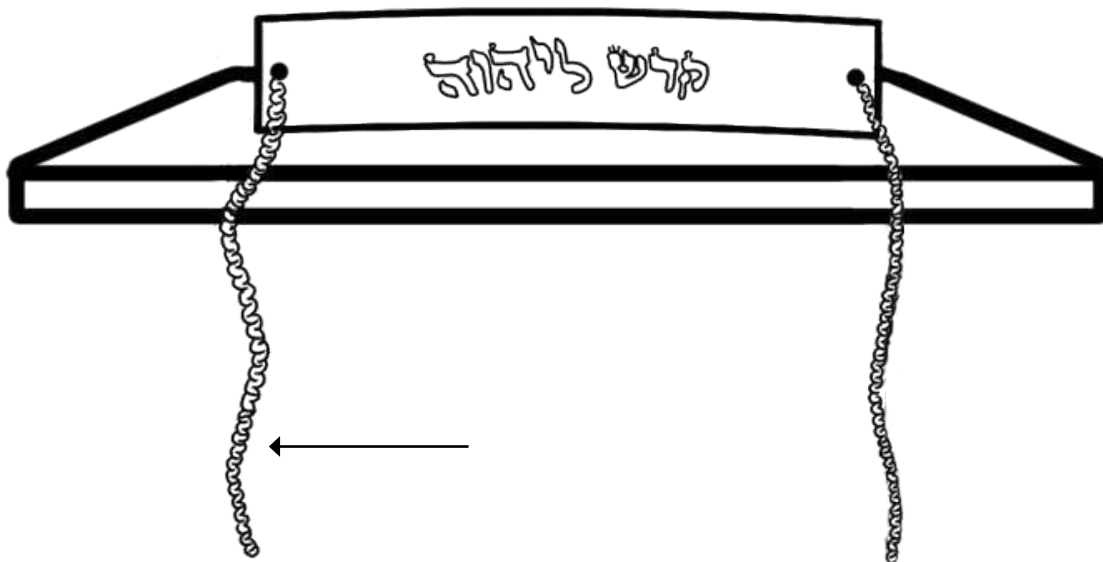
What material was the long shirt made out of? v39 \_\_\_\_\_

Exodus 28 describes the plate of clean gold

Label the following:

- (a) blue cord

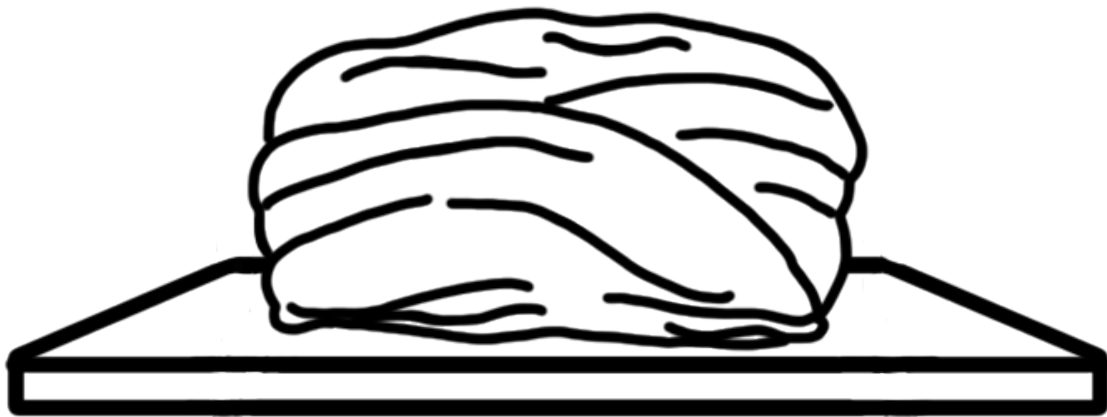
Color the cord blue



What was engraved on the plate? v36

Where was the plate placed? v37

Exodus 28 describes the turban

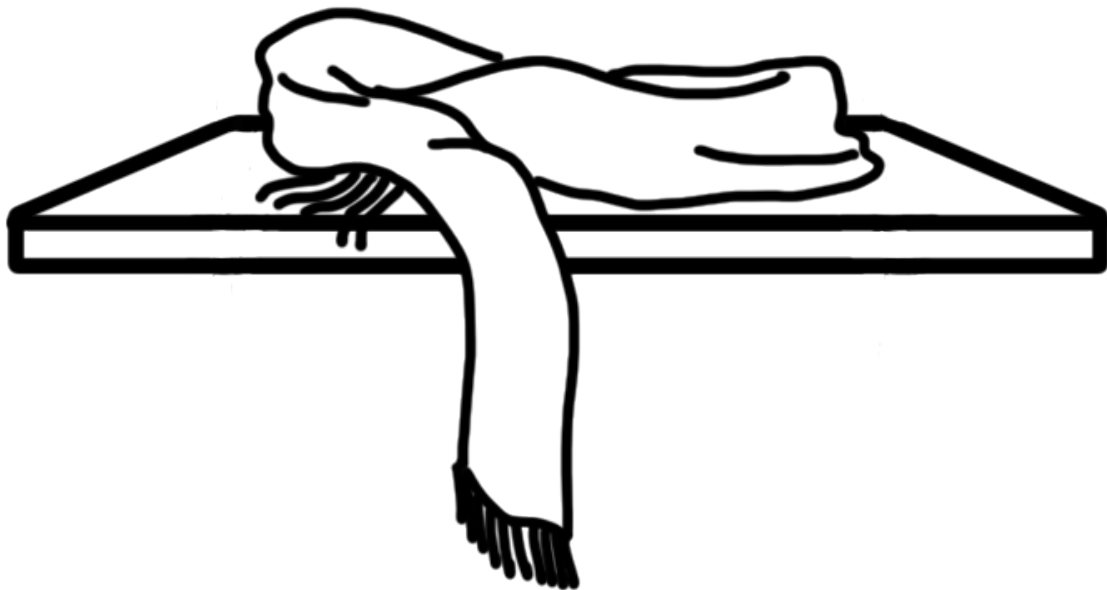


What was the turban made out of? v39

\_\_\_\_\_



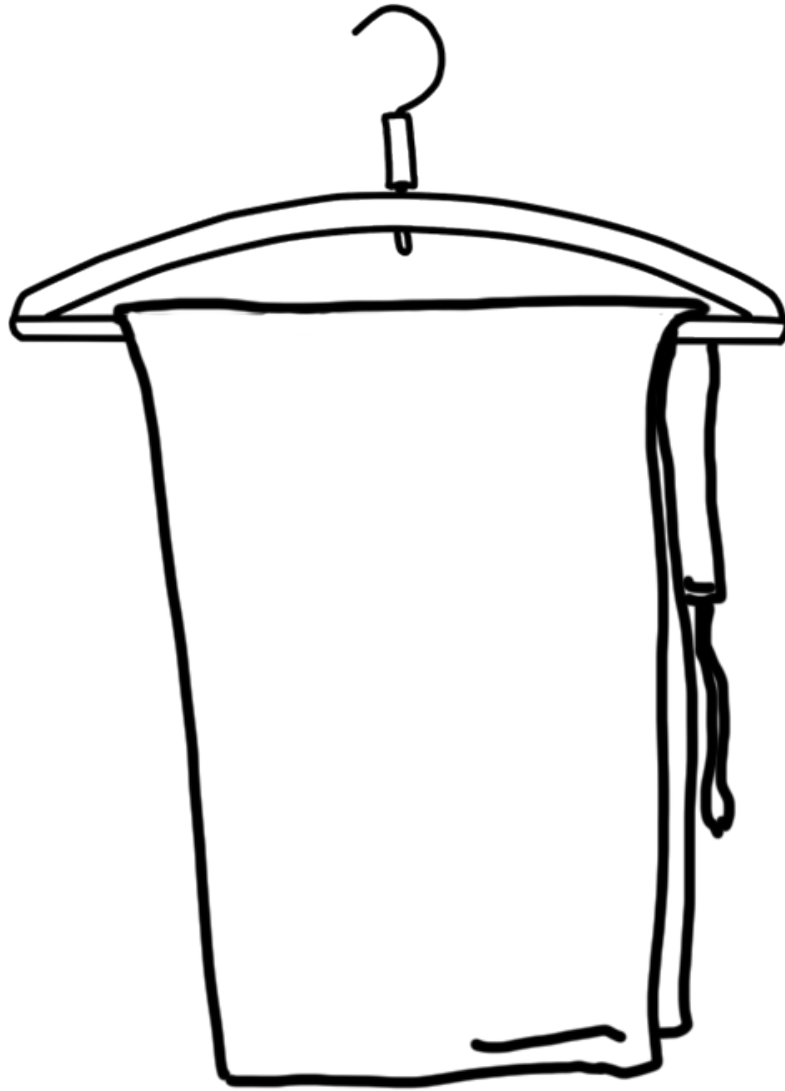
Exodus 28 describes the girdle



What was the girdle made out of? v39

---

Exodus 28 describes the trousers



What were the trousers made out of? v42 \_\_\_\_\_

What were the trousers for? v42 \_\_\_\_\_

How long were the trousers? v42 \_\_\_\_\_

