

Materials:

- Copy paper
- Stiff felt - royal blue, brown, black, skin tone (or colors of choice)
- Glitter glue - gold
- Party toothpick with round bead (for scepter or make your own)
- Double-sided tape (to hold template pieces while cutting)
- Double-sided adhesive tape
- Hot glue
- Tweezers (to assist in placement)
- Permanent marker or pen - black (fine tip)
- Scissors
- Craft Template: King Ahashwerosh (BW)

Parent/Teacher Preparation:

- Print Craft Template on copy paper.
- Depending on the skill of the child, you may need to assist them in cutting out the Craft Template and felt pieces.

King Ahashwerosh Finger Puppet



Instructions for the Craft:

- Cut out all Craft Template pieces, including the 'King Ahashwerosh image' and 'face drawing.' (P1)
- Place double-sided tape onto the back of the paper template pieces and lay over felt colors indicated (or colors of choice). Cut around the templates you have just placed on the felt. Cut out the face area on the 'hair and beard.' (P2)
- Cut out the face area on the 'hair and beard.' (P3)
- Remove the paper templates from the felt pieces. (P4)
- Keep the paper 'body template,' 'left & right arm templates,' 'hat template,' and 'hair and beard template' for reference in placement or drawing if desired.
- Run double-sided adhesive tape around the edges of the 'body back,' making sure to leave an opening at the bottom, and place the 'body front' over it. (P5a, P5b)
- Run double-sided adhesive tape on the 'left & right arm' and place the 'left & right hand' on the adhesive at the edge of the sleeve. (P6a, P6b)
- Flip the 'left & right arm' over and place onto the 'body front.' (P7)
- Using a fine tip black permanent marker or pen, draw the finger details. (P8)



P1



P2



P3



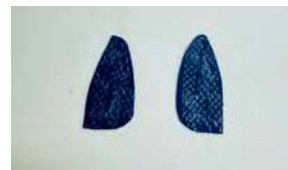
P4



P5a



P5b



P6a



P6b



P7



P8

Instructions for the Craft cont'd:

- Using gold glitter glue, embellish the:
 - scepter (P9a)
 - robe and sleeves (P9b, P9c)
 - hat band (P9d)
- Allow to dry.
- Run double-sided tape on the head area on the 'body front' and place the 'head' onto the adhesive. (P10a, P10b)
- Run double-sided adhesive tape on the back of the 'hair and beard' but not the beard area and place the 'hair and beard' onto the 'head.' (P11a, P11b)
- Using a fine tip black permanent marker or pen, draw the face details. (P12)
- Apply hot glue to the end of the scepter and place underneath the left hand facing you. (P13a, P13b)
- Run double-sided adhesive tape on the back of the 'hat band' and place on the 'hat.' (P14a, P14b)
- Run double-sided adhesive tape on the top of the 'head' and place 'hat' onto the adhesive. (P15a, P15b)
- Using gold glitter glue, embellish the 'hat band.' (P16)
- Set the King Ahashwerosh finger puppet aside to dry.



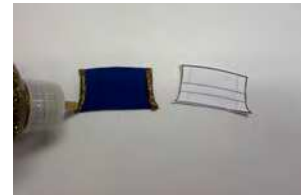
P9a



P9b



P9c



P9d



P10a



P10b



P11a



P11b



P12



P13a



P13b



P14a



P14b



P15a

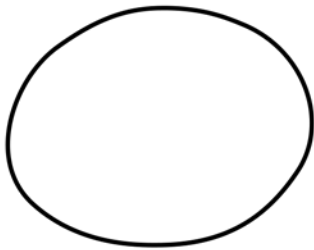


P15b



P16

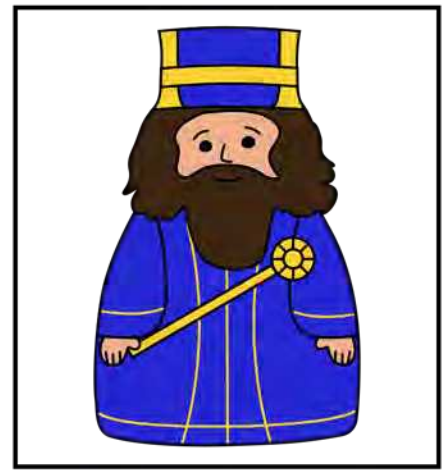
..... = Gold Glitter Glue



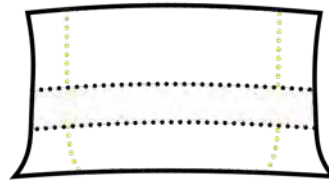
Head
skin tone
Cut 1



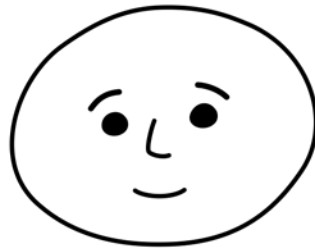
Hair and Beard
brown
Cut 1



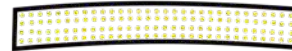
King Ahashwerosh Image



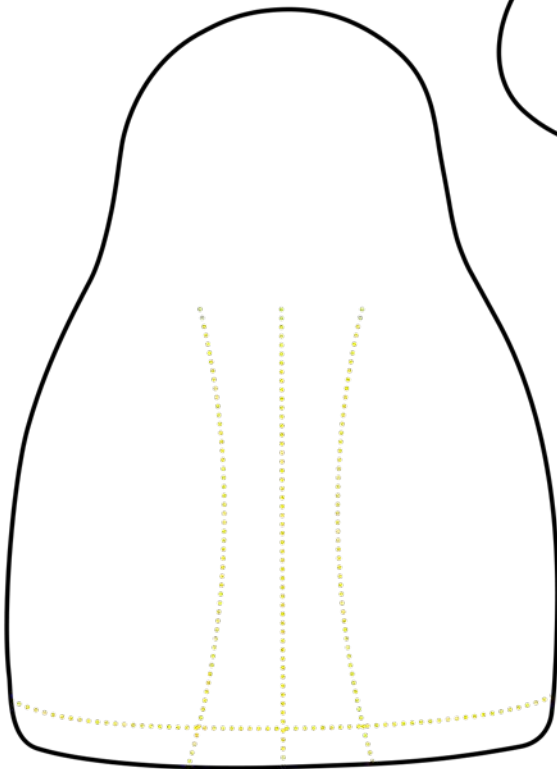
Hat
royal blue
Cut 1



Face



Hat Band
black
Cut 1



Body Front and Back
royal blue
Cut 2



Right Arm
royal blue
Cut 1



Left Arm
royal blue
Cut 1



Right Hand
skin tone
Cut 1



Left Hand
skin tone
Cut 1