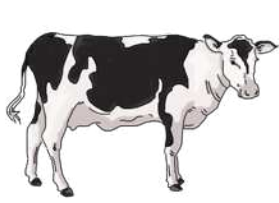


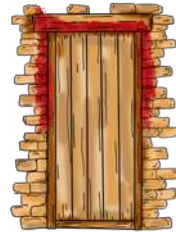
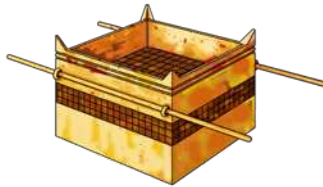
SEEKING TREASURE

Circle the correct choices.

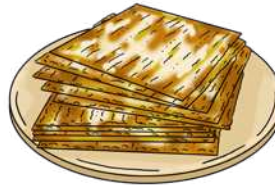
1. The lamb could be taken from these 2 animals. (12:5)



2. Where was the blood supposed to be put on the very first Passover? (12:7)



3. What were the other 2 things that the Yisra'elites were supposed to eat with the lamb? (12:8)



4. How were they told to dress the 1st Passover? (12:11)



5. How many days are we supposed to eat unleavened bread? (12:15)

