

## Materials:

- Copy paper
- Felt - red, blue, brown, cream
- Double-sided tape (to hold template pieces while cutting)
- Hot glue
- Scissors
- Permanent marker - black (ultra fine tip)
- Craft Template: Ruth (BW)

### Parent/Teacher Preparation:

- Print Craft Template on copy paper.
- Depending on the skill of the child, you may need to assist them in cutting out the template and felt pieces.

## Ruth Felt Finger Puppet



## Instructions for the Craft:

- Cut out all template pieces. (P1)
- Place template pieces on felt, using double-sided tape to hold them in place. Be sure to match each template piece to the color of felt designated on the template. (P2)
- Cut out the felt pieces. (P2)
- Apply hot glue to the edges of the 2 body pieces and put them together, making sure to leave an opening at the bottom. (P3)
- Glue the right and left robe pieces, head, hair, arms, and hands onto the body front, referring to the puppet image on the template for placement. (P4)
- Using black permanent marker, draw the face and hands details, referring to the puppet image on the template for placement. (P5)
- Set the Ruth felt finger puppet aside to allow the glue to dry.



P1



P2



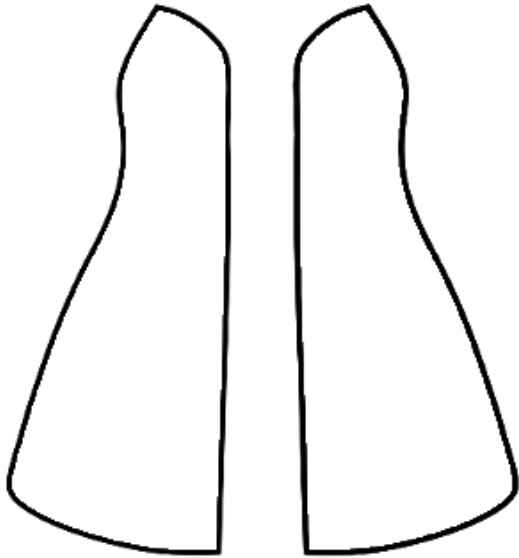
P3



P4



P5

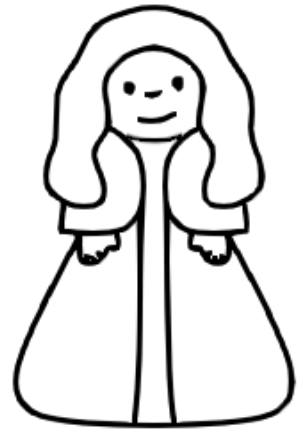


**RIGHT ROBE**  
RED

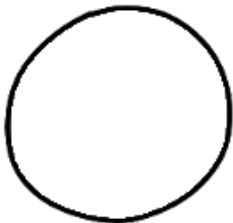
**LEFT ROBE**  
RED



**HAIR**  
BROWN



**RUTH**  
TEMPLATE FOR  
FELT PUPPET



**HEAD**  
CREAM



**FACE**



**RIGHT ARM**  
RED



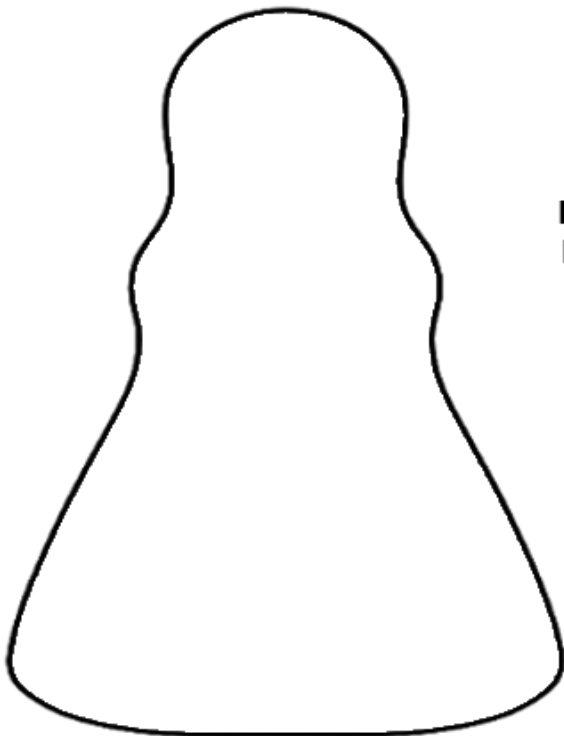
**LEFT ARM**  
RED



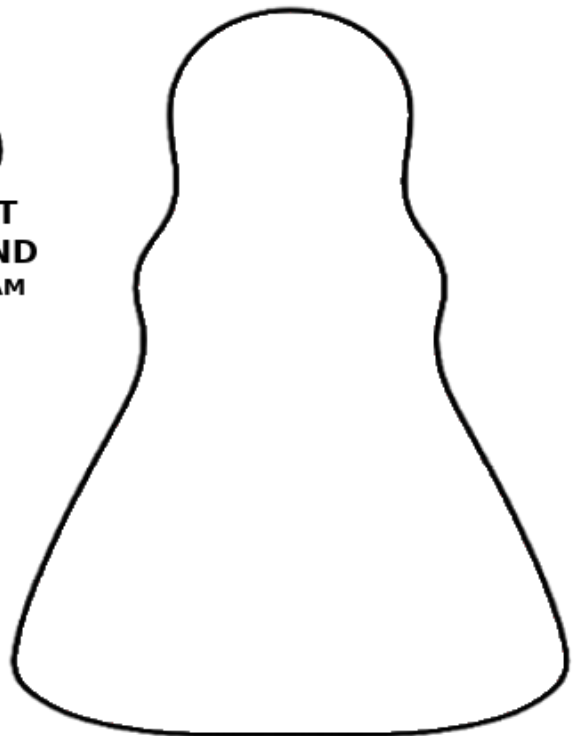
**RIGHT HAND**  
CREAM



**LEFT HAND**  
CREAM



**BODY FRONT**  
BLUE



**BODY BACK**  
RED