

# PRECIOUS POSSESSIONS

## Craft Instructions Water from the Rock Numbers 20:11

### Materials:

- Cardboard from a cereal box or any other box, big enough to make (10) circles
- Brown butcher paper or a grocery sack
- Hot glue
- White glue
- Rules
- Scissors
- Pen
- Hook and loop dots
- Small wooden dowel (1)

### For slime to represent water:

- $\frac{1}{4}$  cup clear school glue
- $\frac{1}{2}$  Tbsp. baking soda
- $\frac{1}{4}$  cup warm water
- 1 tbsp. saline contact solution
- Bowls (2)
- Measuring cups and spoons
- Spoon or rubber spatula: to stir
- Napkins
- Clear plastic container with a lid or plastic re-sealable bag (to store slime)
- Clear tape
- Option 2: silver foil shreds



### Parent/Teacher preparation:

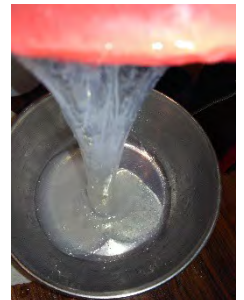
There are many recipes out there for slime, gack, etc. We conducted quite a bit of research as well as tests and trials to get this consistency and color so it will look like water. You may choose to use this recipe or one of your own. If you do not wish to make the slime, skip those steps and go to Option 2.

### Instructions for the craft:

#### For 'water' slime:

- In a bowl pour  $\frac{1}{4}$  cup of clear school glue, then add  $\frac{1}{2}$  tablespoon of the contact solution and begin stirring. Make sure it is well mixed.
- In the second bowl, add  $\frac{1}{4}$  cup of warm water and  $\frac{1}{4}$  teaspoon of baking soda. Mix well. It should look clear.
- Pour the water and baking soda mix into the glue and contact solution; mix and stir. (P1)

P1



# PRECIOUS POSSESSIONS

## Craft - page 2:

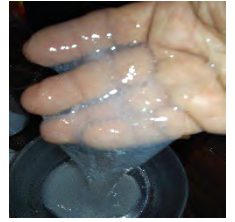
### Instructions for the craft cont'd:

- Add the other  $\frac{1}{2}$  tablespoon of contact solution to the mix and keep stirring until the mixture comes away from the bowl. The feel should be like gelatin, but you should be able to pick it up and it should slide out of your hand like water, but not running wet. (P2)
- Put your 'water' into your re-sealable container and set aside. Note: the slime will get harder when it sits out, so for the effect of it running like water, it needs to be put away quickly.

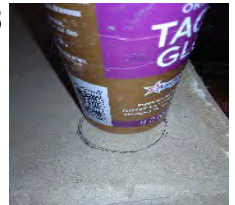
### For the 'rock':

- Find something circular that can be used as a template to trace onto the cardboard. Try to make sure it is small enough to get (10) circles out of your cardboard. (P3)
- Trace (10) circles on the cardboard and cut them out.
- Next, you will be drawing an equilateral triangle on the circle. (P4)  
The size depends on your circle. Use a ruler to draw the lines, making sure they go all the way to the edges of the circle. (P5)
- Repeat this process for all (10) circles.
- Fold along the lines you just drew.
- Next, glue (5) circles together at the tabs you made, so you form a half ball. (P6)
- Repeat with the other half. You now have (2) halves of a ball.
- Crumple up the butcher paper or paper sack; then smooth it again.
- Take the butcher paper or paper sack you just crumpled and get a large enough piece to cover all the sides of each half ball on the outside. (P7)
- Cut the pieces out.
- Carefully hot glue the new butcher paper piece along the outer edges of the ball half. It's fine if you have to bunch up the butcher paper so it will fit. (P8)
- Repeat these steps for the second half of the ball as well.
- Put some hook and loop pieces on the inside tabs of the ball halves; this way you can bring the halves together to make a full ball. This ball will be your rock to keep.

P2



P3



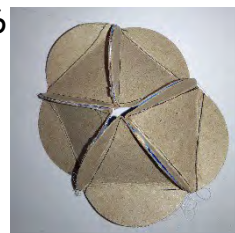
P4



P5



P6



P7



P8



# PRECIOUS POSSESSIONS

Craft - page 3:

Instructions for the craft cont'd:

- Now, take a small amount of the 'water' and put it in one of the ball halves. (P9)
- Bring the ball halves together to enclose the slime in.

This can be used to pretend to strike the 'rock' and then let the 'water' come out of the rock, just like Mosheh did in this week's parsha, by pulling the halves apart, but not necessarily all the way open.

Final notes:

- Do NOT leave your slime in the 'rock.' It needs to be sealed in an airtight container when not in use.
- Option 2: Take a handful of the silver foil shreds and glue or tape them to the inside of one of the ball halves. (P10)

P9



P10

