

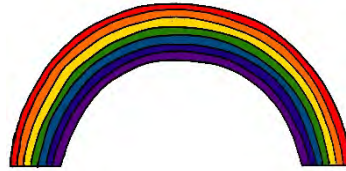
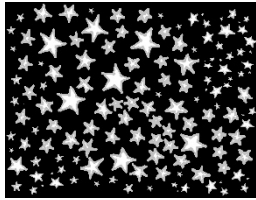
# SEEKING TREASURE

Circle the correct choices.

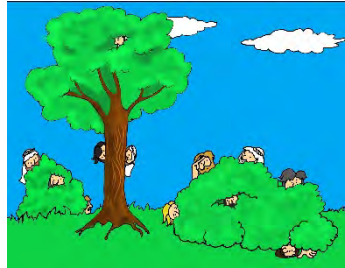
1. How many years did the Yisra'elites wander in the wilderness? (1:3)



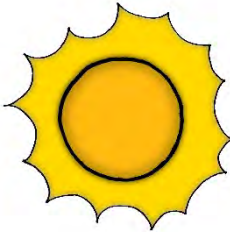
2. Mosheh told them that they were as numerous as this. (1:10)



3. Which story was recounted in this parsha? (1:22)



4. What did Mosheh say led their way in the wilderness? (1:33)



5. Who did Yahweh say was going to enter the land? (1:36, 38)



Moshēh



Kaleb



Aharon



Yehoshua