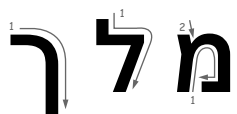


Melek (sovereign/king)

מלך

Kaf Sofit Lamed Mem




---



---



---

Susim (horses)

סוסים

Mem Sofit Yud Samech Vav Samech




---



---

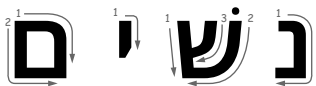


---

Nashim (wives)

נשים

Mem Sofit Yud Shin Nun




---



---



---

Torah (teaching and instruction)

תורה

Hey Resh Vav Tav




---



---



---

