

PRECIOUS POSSESSIONS

Craft Instructions

Gate

Deuteronomy 12:12, 15, 17, 21; 14:27-29; 15:7, 22; 16:5, 11, 14

Materials:

- Card stock - yellow, tan, gray or brown (1)
- Card stock - white (1)
- White glue or *Tacky Glue*
- Sponge paint brush
- Paint - color of choice (to paint the walls)
- Cups (for paint and water)
- Sharp point scissors or a craft knife
- Scraps of tissue paper - different colors
- Optional: dimensional paint for child to write their name on the gate door
- Optional: a wallet sized picture of the child who is making the craft
- Craft Templates: Main Page & A
- Option 2: string



Parent/Teacher Preparation:

This craft uses glue which will take time to dry. You may choose to start the project the day before or there is an alternate method given to complete the craft in a shorter amount of time.

- Print Main Page on the colored card stock and Craft Template A on white card stock.

Instructions for the craft:

- Outline the wall and gate opening on Main Page with thick glue lines. (P1)
- Set aside to allow the glue to dry.
- Cut the gate door out of Craft Template A. Do NOT discard the rest of the card stock; it will be used later on for this craft.
- Using scissors or craft knife, cut out the white parts between the black lines on the door, being careful NOT to cut the lines. (P2)
- Using pieces of tissue paper, cover each section in different colors. It is not necessary to use a different color for each section. (P3)
- Place the door right side down and begin adding glue one section at a time and putting the tissue you want to show on that section. If the tissue is larger than the section, trim any excess that can be seen in a different opening. Excess sticking out from the outer edges can be trimmed at the end. (P4)

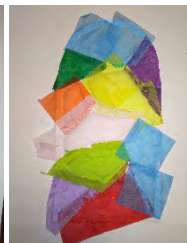
P1



P2



P3



P4



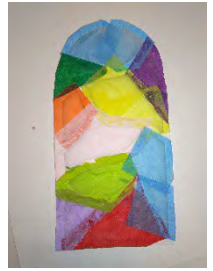
PRECIOUS POSSESSIONS

Craft - page 2:

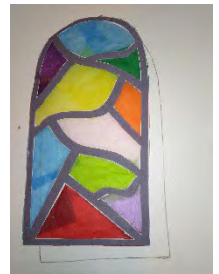
Instructions for the craft cont'd:

- Continue attaching pieces of tissue until all of the openings are covered. (P5)
- Once dried, carefully trim the excess from the outer edges.
- Check if the glue has dried on the wall template. It does not have to be completely hard, as long as it is dry when you touch it gently.
- Once it is dry enough, place some paint in your cup and using the ^{P6} sponge brush, begin painting all over the wall and gate opening. (P6) Make sure you do not have too much paint on your brush.
- Once the whole thing is painted, set it aside to dry.
- Return to the gate door.
- Take the finished door and place it on top of the excess card stock. (P7)
- Trace around it to make a back cover. (P7)
- Cut the back cover out and glue it to the back of the door.
- Cut 2 strips from the rest of the card stock 3" by 1"; this will be the door hinges. (P8)
- Fold the strips in half and glue them to 1 edge of the gate door. (P8)
- Glue the other half of the strip to the gate opening.
- To identify the gate as their gate you can do either of the following or both:
 - Write the child's name with dimensional paint on the gate door.
 - Glue the child's picture on the gate opening so they can see themselves when they open the gate door.

P5



P7



P8



Option 2

- Glue pieces of string over the glue lines. This method will allow you to do the painting sooner.

This is a visual to discuss Yahweh's instruction regarding what is to be done within your gates and what is to be done in the place which Yahweh your Elohim chooses to place His Name.

