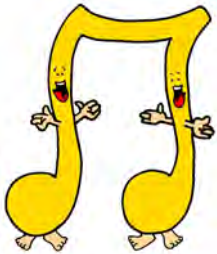


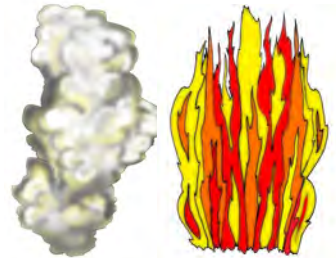
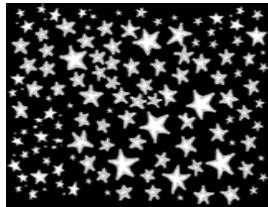
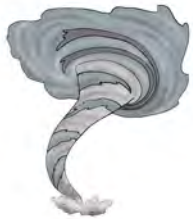
SEEKING TREASURE

Circle the correct choices.

1. Which picture best represents the type of message Mosheh was told to speak to the children of Yisra'el? (31:30)



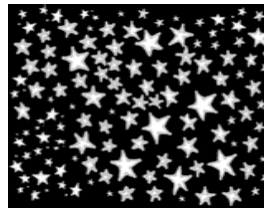
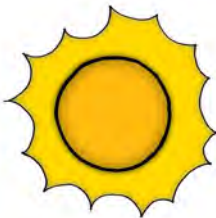
2. Which picture portrays what Yahweh's Words drop down as? (32:2-3)



3. Yahweh takes care of His children as this bird takes care of her young. (32:11)



4. Where was Mosheh told to go up to? (32:49)



5. What did Mosheh see before he died? (32:52)

