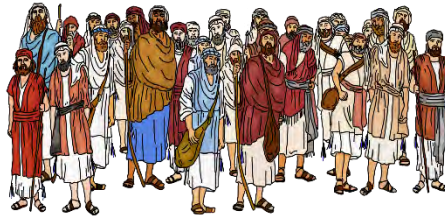


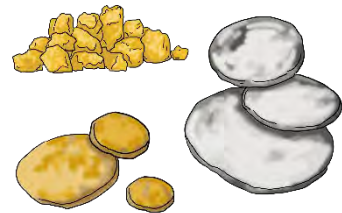
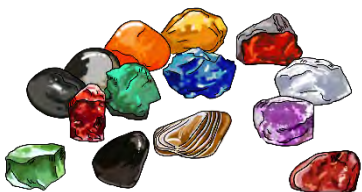
# SEEKING TREASURE

Circle the correct choices.

1. Which picture best represents the blessing of Re'uben? (33:6)



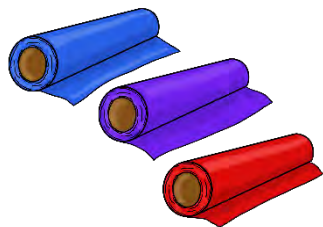
2. Which stones represent Lewi's blessing? (33:8)



3. Which picture best represents Dan's blessing? (33:22)



4. Which picture best represents Asher's blessing? (33:25)



5. Who did Mosheh appoint as leader after him? (34:9)



Korach



Abiram



Yehoshua



Kaleb

