

Precious Possessions

NOTEBOOK PAGE

A Tale of Yonah

Yonah 1:17; 4:6

Materials:

- Cardstock - white
- Foam - white or color of choice
- Double-sided adhesive foam
- Velcro dots
- Puffy paint or glitter glue - blue & gold
- Puncturing tool
- Brad
- Ruler
- Glue or glue stick
- Coloring pencils, crayons or markers
- Notebook Templates: Main Page & A (BW) or Main Page & B (color)



Parent/Teacher Preparation:

- Print Notebook Templates of choice on white cardstock.

Instructions for the Notebook Page:

- If using BW Templates, color using medium of choice.
- Cut out Template pieces. (P1)

Water Side

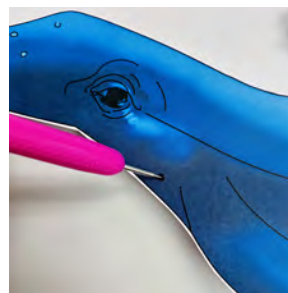
- Using blue puffy paint or glitter glue, add dimension to the water waves and the bubbles. (P2)
- Allow to dry.
- Using a puncturing tool, make a hole through the dots on the big fish pieces. (P3a, P3b)
- Using a brad, connect the big fish main body to its lower jaw. (P4)
- Place double-sided foam dimensional to the back of the big fish. Make sure before you remove the paper that you don't place it where the mouth won't be able to open wide. (P5)



P1



P2



P3a



P3b



P4



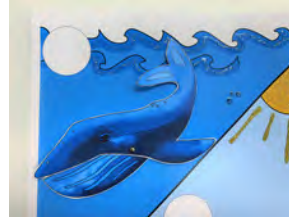
P5

Instructions for the Notebook Page Cont'd:

- Adhere the big fish to the page so that when he opens his mouth you can see Yonah inside of it. (P6a, P6b)

Land Side

- Using gold puffy paint or glitter glue, add dimension to the sun and rays. (P7)
- Allow to dry.
- Fold the plant along the fold lines. (P8)
- Place the plant on the page to mark where the 2 hook *Velcro* dots will be placed. The *Velcro* dots should be placed so that you can shrink or enlarge the trunk and use one hidden soft loop *Velcro* dot on the Main Page. (P9a, P9b)
- When shrunk the plant should be directly over Yonah's head. (P10)
- When enlarged the plant should be close to the sun. (P11)
- Keeping the trunk folded, glue the first fold onto the Main Page. (P12)



P6a



P6b



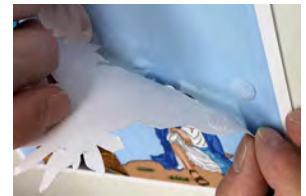
P7



P8



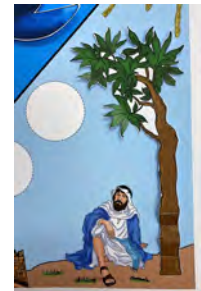
P9a



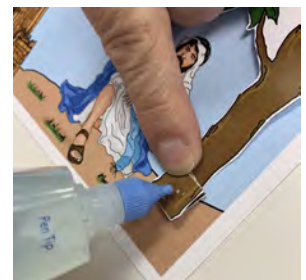
P9b



P10



P11



P12

Instructions for the Notebook Page Cont'd:

Hebrew Words

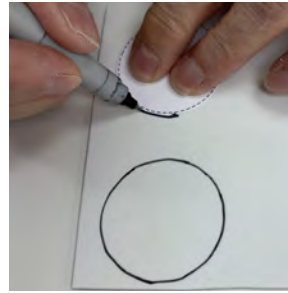
- Using the circle template, trace onto foam and cut out 4 circles. (P13a, P13b)
- Write the following on 2 foam circles and glue them to the circles on the Water Side Main Page: (P14, P15)

- 1) Yam 2) ים 3) Sea
- 1) Dag 2) דג 3) Fish

- Write the following on the other 2 foam circles and glue them to the circles on the Land Side Main Page: (P16, P17)

- 1) Iyr 2) עיר 3) City
- 1) Qiqayon 2) קיקיון 3) Plant

You now have a visual representation of Yonah being swallowed up by a great fish, and of a plant that Yahweh Elohim caused to come up to be a shade for Yonah as he was sitting outside the city of Nineweh to see what would become of it.



P13a



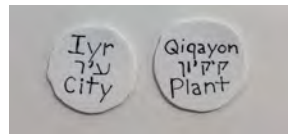
P13b



P14



P15



P16



P17